

Mobile cleaning unit

With Aisi/316 foam dispenser system



Entirely designed and produced by VEMA, with all cleaning needs in the various sectors of the food industry in mind. .

This washing machine represents a mix of exceptional safety, functionality, power, efficiency and durability

The pressure can be adjusted from 20 to 200 bars with flow rates of from 15 to 21 l/min

The machine is fitted with a support for manual hose reel (optional) with 20 m high pressure hose and practical pull-out trigger gun, lance holders, 30 kg detergent container holder (2 X 30 kg with Foam system dual suction) and reliable stainless steel dispenser system with bypass for foam distribution

The ease of movement thanks to the four wheels, delayed total stop device activated by closing the lance with zeroing of pressure in the delivery hose, high manoeuvrability of the low voltage (24 V) machine controls, special seal system suitable for hot water even at a temperature of more than 80°C and attractive elegant design make this great little washing machine the best answer to all the indoor and outdoor cleaning needs of every company, greatly simplifying the work of cleaning operatives, particularly in the food sector .

FDR
Super
Super-Air

9



Feb 2013

FDR Super Super-Air

9



Exclusive system (patented)
dosing system Aisi/316
complete of by-pass

AVAILABLE CONFIGURATION

MODEL	CODE	FLOW RATE (lt/min)	PRESSURE (Bar)	POWER (KW)	VOLTAGE (Volt)	RPM	WEIGHT (Kg)	* DIMENSIONS LxHxD (mm)	WATER IN-LET MAX TEMPERATURE	MAX NUMBER OF OPERATORS
FDR SUPER COMPLETE OF S/S DOSING SYSTEM FOR WORKING PRESSURE OVER 100 BAR	50060	15	20 - 150	4	400	1450	90	550 x 850 x 1000	80 °C	1
	50061	<i>As good as 50060 but complete of s/s manual hose reel on board fitted as standard</i>				1450	100	550 x 1000 x 1000	80 °C	1
	50065	15	20 - 200	5,5	400	1450	90	550 x 850 x 1000	80 °C	1
	50066	<i>As good as 50065 but complete of s/s manual hose reel on board fitted as standard</i>				1450	100	550 x 1000 x 1000	80 °C	1
	50071	21	20 - 150	5,5	400	1450	90	550 x 850 x 1000	80 °C	1
	50072	<i>As good as 50071 but complete of s/s manual hose reel on board fitted as standard</i>				1450	100	550 x 1000 x 1000	80 °C	1
FDR SUPER AIR COMPLETE OF S/S DOSING SYSTEM FOR WORKING PRESSURE LESS THAN 100 BAR	50080	15	20 - 150	4	400	1450	90	550 x 850 x 1000	80 °C	1
	50081	<i>As good as 50080 but complete of s/s manual hose reel on board fitted as standard</i>				1450	100	550 x 1000 x 1000	80 °C	1
	50085	15	20 - 200	5,5	400	1450	90	550 x 850 x 1000	80 °C	1
	50086	<i>As good as 50085 but complete of s/s manual hose reel on board fitted as standard</i>				1450	100	550 x 1000 x 1000	80 °C	1
	50091	21	20 - 150	5,5	400	1450	90	550 x 850 x 1000	80 °C	1
	50092	<i>As good as 50091 but complete of s/s manual hose reel on board fitted as standard</i>				1450	100	550 x 1000 x 1000	80 °C	1

*FOR MODELS WITH DUAL HOLDER FOR TANK D=1014 mm

FOR MODELS "SUPER AIR" MUST BE PROVIDED A CONNECTION OF COMPRESSED AIR (FROM 4 TO 6 BARS MAX)

TECHNICAL DETAILS

- Low voltage controls (24 volt).
- Total stop
- Motor protection circuit breaker
- Over temperature 80 ° C safety control
- Pressure adjustment
- Pressure indicator
- Pressure and flow controls
- Pump with s/s piston covered by ceramics and immersion lubrication.
- IP55 control panel.
- S/s dosing system Aisi/316 complete of by-pass for foam and disinfection
- Air system for a more compact foam (only for Super -Air version)
- Chemical tank 30 Kg (2 x 30 Kg with dual holder tank)
- S/s frame
- Cover in preformed Abs.

Standard accessories



S/s nozzle 1/8"
Code 190xx

S/s washing lance cm 90 without nozzle complete of pin ø 14
Code 11105/ST18



S/s Foam lance cm complete of
nozzle and pin ø 14
(only for Fdr Super)
Code 11150



S/s Foam lance cm complete of
nozzle and pin ø 14
(only for Fdr super air)
Code 11208

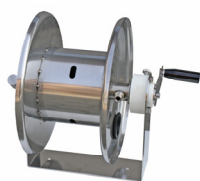


H.P. hose R/2 L= 20 mt. Crimped 3/8"
zinc. female
Code 18220



H.p. gun with coupling Ø 14
Code 25095/ST

Optional accessories



S.s manual hose reel
Code 10400/X
(Section 51)



S/S Dual holder for tank with wheel
Code 33112/2R



Kit Double Suction
S/S Dual holder for tank with
N. 02 Ball Valves for dosing detergents
Code K80